

86231

4-12

CURVE No. 1
 P.I. Sta. 1052+61.00
 $\Delta = 20^{\circ}31'24''$
 $D = 3^{\circ}00'$
 $T = 345.69'$
 $L = 683.89'$
 $R = 1910.08'$
 P.C. Sta. 1049+15.31
 P.T. Sta. 1055+99.20

CURVE No. 2
 P.I. Sta. 1089+50.74
 $\Delta = 62^{\circ}48'45''$
 $D = 6^{\circ}00'$
 $T = 583.30'$
 $L = 1046.88'$
 $R = 955.366'$
 P.C. Sta. 1083+67.44
 P.T. Sta. 1094+14.32

CURVE No. 3
 P.I. Sta. 88+58.92
 $\Delta = 51^{\circ}24'52''$
 $D = 5^{\circ}59'50''$
 $T = 460.15'$
 $L = 857.30'$
 $R = 955.81'$
 P.C. Sta. 83+98.77
 P.T. Sta. 92+56.07

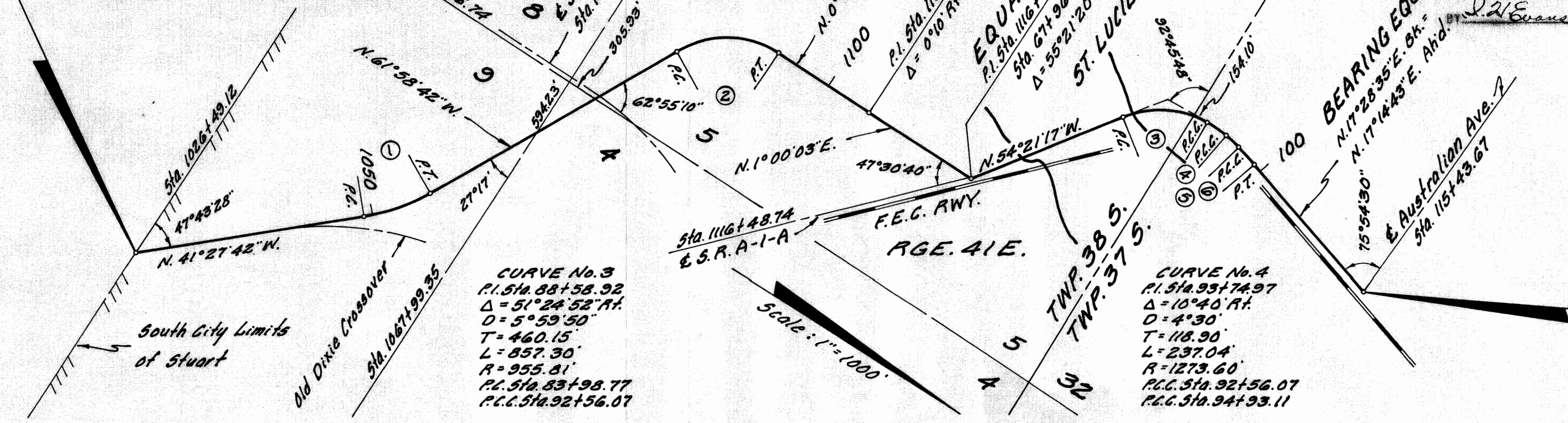
CURVE No. 4
 P.I. Sta. 93+74.97
 $\Delta = 10^{\circ}40'00''$
 $D = 4^{\circ}30'$
 $T = 118.90'$
 $L = 237.04'$
 $R = 1273.60'$
 P.C. Sta. 92+56.07
 P.T. Sta. 94+93.11

CURVE No. 5
 P.I. Sta. 95+86.53
 $\Delta = 5^{\circ}36'00''$
 $D = 3^{\circ}00'$
 $T = 93.42'$
 $L = 186.61'$
 $R = 1910.08'$
 P.C. Sta. 94+93.11
 P.T. Sta. 96+79.72

CURVE No. 6
 P.I. Sta. 97+96.40
 $\Delta = 4^{\circ}09'00''$
 $D = 1^{\circ}46'44''$
 $T = 116.68'$
 $L = 233.28'$
 $R = 3220.30'$
 P.C. Sta. 96+79.72
 P.T. Sta. 99+13.00

BEGIN SURVEY
 STA. 1026+49.12

END SURVEY
 STA. 115+43.67



FILED & RECORDED
 IN MARTIN COUNTY, FLA.

1962 FEBRU 28 AM 10:00

DOROTHY PIERCE, CLERK

BY J. H. Evans, D.C.

We, Ralph Davis as Director of the State Road Department of the State of Florida, and L.A. Fraleigh, as Secretary of the State Road Department of the State of Florida, do hereby certify that this map is the Official Map of Location and Survey of a portion of Section 89010, designated as a part of State Road 5 in Martin County, Florida: Said portion of Section 89010 extending from the South City Limits of Stuart Northwest to Australian Avenue.

Filed for record in the Office of the Clerk of the Circuit Court for the County of Martin, State of Florida, in Map Book A, Page 12, on the 28th day of February, A.D. 1962.

Prepared and adopted by the State Road Department of the State of Florida under provisions of Section 335.02, Florida Statutes of 1955.

Ralph Davis
 Director, State Road Department

Attest: L.A. Fraleigh
 Secretary, State Road Department

Approved: [Signature]
 Engineer of Rights of Way
 Date: August 25, 1960

Dorothy Pierce
 Clerk of the Circuit Court
 Martin County, Florida

Section 89010

Rd. 5

Martin Co.

N.C.S.